

EDGEWATER ROAD TO NORTH BERGEN BORDERLINE

-  GLASS + PLASTIC BOTTLES & JARS  
+ ALUMINUM + TIN CANS  
1st & 3rd FRIDAY (OR AS POSTED)
-  NEWSPAPERS, CARDBOARD & MAGAZINES  
3rd THURSDAY-(OR AS POSTED)
-  GRASS CLIPPINGS - EVERY TUESDAY  
STARTING APRIL 3rd - OCTOBER 2nd  
(OR AS POSTED)
-  NO PICK-UP HOLIDAY GARBAGE  
PICK-UP THE FOLLOWING DAY

**BOROUGH OF CLIFFSIDE PARK**

Mayor  
**GERALD A. CALABRESE**




Council  
Donna Spoto Bernard Fontana  
Dana Martinotti Larry Bongard  
Thomas Calabrese Kenneth Corcoran

 TRASH - 1st & 3rd MONDAY  
(OR AS POSTED)  
DURING: JANUARY, FEBRUARY, MARCH,  
NOVEMBER & DECEMBER THE TRASH PICK-UP  
WILL BE ON MONDAY AND TUESDAY  
BY APPOINTMENT ONLY  
SNOW ALERT: UNLAWFUL TO SHOVEL SNOW  
INTO THE STREET AFTER THE PLOWS PASS BY.  
BOROUGH ORDINANCE 3-14.1g




**JANUARY**

SUN	MON	TUE	WED	THUR	FRI	SAT
▲	2	3	4	5		7
8	9	10	11	12	13	14
15	16	17	18			21
22	23	24	25	26	27	28
29	30	31				

**FEBRUARY**

SUN	MON	TUE	WED	THUR	FRI	SAT
			1	2		4
5	6	7	8	9	10	11
12	13	14	15			18
19	20	21	22	23	24	25
26	27	28	29			

**MARCH**

SUN	MON	TUE	WED	THUR	FRI	SAT
				1		3
4	5	6	7	8	9	10
11	12	13	14			17
18	19	20	21	22	23	24
25	26	27	28	29	30	31

**APRIL**

SUN	MON	TUE	WED	THUR	FRI	SAT
1			4		6	7
8	9		11	12	13	14
15			18			21
22	23		25	26	27	28
29	30					

**MAY**

SUN	MON	TUE	WED	THUR	FRI	SAT
			2	3		5
6			9	10	11	12
13	14		16			19
20			23	24	25	26
27	28	29		31		

**JUNE**

SUN	MON	TUE	WED	THUR	FRI	SAT
						2
3			6	7	8	9
10	11		13	14		16
17			20		22	23
24	25		27	28	29	30

**JULY**

SUN	MON	TUE	WED	THUR	FRI	SAT
1			4	5		7
8	9		11	12	13	14
15			18			21
22	23		25	26	27	28
29	30					

**AUGUST**

SUN	MON	TUE	WED	THUR	FRI	SAT
			1	2		4
5			8	9	10	11
12	13		15			18
19			22	23	24	25
26	27		29	30	31	




**SEPTEMBER**

SUN	MON	TUE	WED	THUR	FRI	SAT
						1
2	3			6		8
9	10		12	13	14	15
16			19			22
23	24		26	27	28	29
30						

**OCTOBER**

SUN	MON	TUE	WED	THUR	FRI	SAT
		3	4		6	
7	8	9	10	11	12	13
14		16	17			20
21	22	23	24	25	26	27
28	29	30	31			

**NOVEMBER**

SUN	MON	TUE	WED	THUR	FRI	SAT
				1		3
4	5	6	7	8	9	10
11	12	13	14			17
18	19	20	21	22	23	24
25	26	27	28	29	30	

**DECEMBER**

SUN	MON	TUE	WED	THUR	FRI	SAT
						1
2	3	4	5	6		8
9	10	11	12	13	14	15
16	17	18	19			22
23	24	▲	26	27	28	29
30	31					

**IT'S THE LAW: ORDINANCE BH 7: 7-4 NO TRASH OR GARBAGE IS TO BE PLACED AT CURB SIDE BEFORE 6:00 PM ON THE EVE OF PICK-UP DATE**

GRASS CLIPPINGS CAN BE MIXED WITH A FEW LEAVES, HEDGE CLIPPINGS OR OTHER VEGETATIVE WASTE THAT MAY BE PICKED UP FROM YOUR LAWN WHILE RAKING AND TO BE PLACED IN CLEAN EMPTY RECEPTACLES (NO PLASTIC BAGS OR PAPER BAGS)

**NOTE:** AFTER FIRST TUESDAY IN OCTOBER GRASS CLIPPINGS ARE NOT TO BE PLACED IN RECYCLING CONTAINER.

DURING THE PERIOD FROM SEPTEMBER 1 THROUGH DECEMBER 31 ONLY, LEAVES SHALL BE PLACED IN PILES ALONG THE CURB LINE OF THE STREET. LOOSE PILES SHALL NOT EXCEED FIVE FEET IN WIDTH FROM THE CURB LINE. LEAVES WILL BE REMOVED ON SWEEPER DAY. NJDEP-PROHIBITING ALL YARD WASTES FROM BEING PLACED WITHIN THE CARTWAY CLOSER THAN 10 FEET FROM ANY STORM SEWER INLET ALONG THE STREET.

DURING THE PERIOD FROM JANUARY 1 TO MARCH 31, LEAVES SHALL BE PLACED IN BAGS CONTAINING ONLY LEAVES AND NOT INTERMINGLED WITH ANY SOLID WASTE. THESE BAGGED LEAVES WILL BE PICKED UP ON SUCH DAYS AS MAY BE DESIGNATED BY THE DEPARTMENT OF PUBLIC WORKS.

NEWSPAPERS, TELEPHONE BOOKS, MAGAZINES AND CARDBOARD. THEY MUST BE TIED IN A BUNDLE WITH TWINE, STRING OR CORD. (NO PLASTIC BAGS)

**NO**



**YES**



**NO**

**=**

GLASSWARE - DRINKING GLASSES, MUGS, ETC.  
PORCELAIN / POTTERY - VASES, PLATES, CUPS, ETC.  
LIGHT BULBS, WINDOW AND WINDSHIELDS (AUTO) GLASS,  
MIRROR, STONES, ASPHALT, PLASTIC BAGS, ETC.

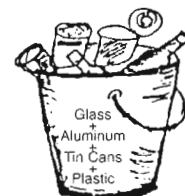
ALL OF THE ABOVE LISTED MATERIALS POSE A SERIOUS CONTAMINATION

NO (GLASS BOTTLES & JARS) + (ALUMINUM CANS) + (TIN CANS)  
+ (PLASTIC-BEVERAGE, MILK, WATER, DETERGENT AND CLEANSER BOTTLES)  
WILL BE PICKED - UP IN PLASTIC OR PAPER BAGS.  
MUST BE PLACED IN AN OPEN CONTAINER, CAN OR PAIL.

**NO**



**YES**



THE ROAD DEPARTMENT WILL NOT PICK-UP ANY DEBRIS FROM WORK DONE BY CONTRACTORS OR LANDSCAPERS.  
ALL RECYCLING ITEMS CAN BE DROPPED OFF AT THE RECYCLING CENTER.

**ORDINANCE 25-13 PENALTIES** (a) The department of public works may refuse to service any occupant who fails to comply with the provisions of this article. 1. For a first or second violation, a fine not exceeding twenty-five (\$25.00) dollars. 2. For a third or fourth violation, a fine not exceeding fifty (\$50.00) dollars. 3. For a fifth or subsequent violation, a fine not exceeding one-hundred (\$100.00) dollars. 4. There shall be a fine imposed for improper use of a recycling container by using it for the disposal of garbage or any other purpose not intended by this chapter. The fines recited on this schedule shall also apply to the improper use of a recycling container. (It shall be noted that the recycling containers are actually the property of the Borough of Cliffside Park and are furnished to the citizens to facilitate the proper disposal of items described in the recycling ordinance.) (b) The continuation of such violation for each successive day shall constitute a separate offense, and the person or persons allowing or permitting the continuation of the violation may be punished as provided above for each separate offense.