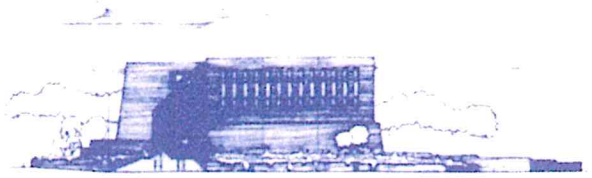


Borough of Cliffside Park

Municipal Complex
525 Palisade Avenue
Cliffside Park, New Jersey 07010
Tel. (201) 945-3456 • Fax. (201) 945-9823



MAYOR THOMAS CALABRESE

"ON TOP OF THE PALISADES"

December 5, 2018

Re: Meter Enforcement Policy for Holiday Season 2018

Dear Merchants and Shoppers:

In an attempt to foster a Happy and Prosperous Holiday Season for Shoppers and Merchants in Cliffside Park, the following Meter Enforcement Policy shall be in effect:

Regular Meter Enforcement will cease on Friday, December 7, 2018 at 6:00 pm and will begin again at 9:00 am on Tuesday, January 1, 2019.

Other parking restrictions such as prohibited areas and double-parking will still be enforced. As per Borough Ordinance #9-1.8, no person shall park in a parking stall in front of which a parking meter is installed for more than a maximum of two hours consecutively.

This two-hour parking limit will be strictly enforced to ensure that everyone has an opportunity to shop.

Have a Healthy and Prosperous Holiday Season!

Very truly yours,

Thomas Calabrese
Mayor